

PREREQUISITES

The prerequisite for participation in the German B2 course is a B1 certificate.

LEARNING OBJECTIVE

After attending the language course, you will be able to communicate better. You will improve your language skills and become more familiar with German grammar. Your vocabulary will become more varied and you will be able to express yourself more clearly in job interviews, in everyday life or at work.

TARGET GROUP

People who are looking for a job and want to acquire the necessary language skills

SUPPORT

Assignment is made by the job centres and employment agencies, the course is funded by the Federal Office for Migration and Refugees (BAMF)



CONTACT

**BBQ Bildung und Berufliche Qualifizierung
gGmbH**

Ines Eisemann

Mobile 0172 1890144

E-Mail eisemann.ines@biwe.de

DATES AND LOCATION

On request or at

<https://www.biwe-bbq.de/jobturbo>



Sprachkurse

VOCATIONAL LANGUAGE COURSE B2 (BAMF COURSE)



Job-Turbo

www.biwe-bbq.de

*Presence course:
You will learn practi-
cally with us on site*





VOCATIONAL LANGUAGE COURSE B2 (BAMF COURSE)

Would you like to live and work in Germany? Do you already have some knowledge of German and would like to develop your career? The German B2 course will support you in this. You will improve your professionally relevant German language skills and thus increase your chances on the labour market.

CONTENTS

- Language skills (speaking, reading, listening, understanding, writing) for everyday work
- improve everyday working life
- Systematically expand grammar skills
- Expand job-specific vocabulary and specialised vocabulary, e.g. German in care, German for educators, industrial/technical German, etc.
- Practise typical professional communication situations in real-life situations

The final examination is organised according to the Common European Framework of Reference for Languages (CEFR).

LEARNING METHOD

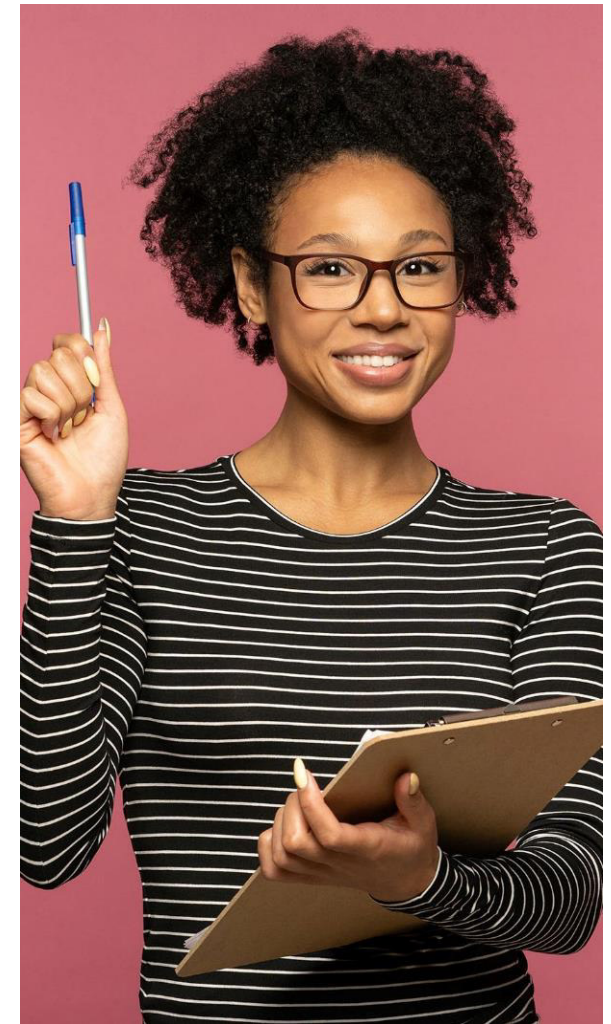
You learn at our branches on site. Qualified and experienced DAF-DAZ instructors teach the language content in a practical way.

TYPE OF DEGREE

B2 certificate

BENEFITS

Language skills are the key to successful integration into the labour market. Our language courses support you in your entry into training or the labour market.



DURATION

500 lessons of 45 minutes each

We are happy to advise you on the funding options.